

Specification

Nominal Voltage	12V	
Nominal Capacity(20hr)	20Ah	
Dimensions	Length	181 ±1mm
	Width	77 ±1mm
	Container Height	167 ±1mm
	Total Height (with Terminal)	167 ±1mm
Approx Weight	Approx 6.0 kg	
Terminal	T12	
Container Material	ABS	
Rated Capacity	20.0 AH/1.0 A	(20hr, 1.80V/cell, 25°C)
	18.0 AH/1.80A	(10hr, 1.80V/cell, 25°C)
	16.0 AH/3.20A	(5hr, 1.75V/cell, 25°C)
	11.1 AH/11.1A	(1hr, 1.60V/cell, 25°C)
Max. Discharge Current	270A (5s)	
Internal Resistance	Approx 12mΩ	
Operating Temp. Range	Discharge : -15~50°C	
	Charge : 0~40°C	
	Storage : -15~40°C	
Nominal Operating Temp. Range	25±3°C	
Cycle Use	Initial Charging Current less than 5.4A. Voltage 14.4V~14.9V at 25 °C Temp. Coefficient -30mV/°C	
Standby Use	No limit on Initial Charging Current Voltage	
	13.6V~13.8V at 25 °C Temp. Coefficient -20mV/°C	
Capacity affected by Temperature	40 °C	102%
	25 °C	100%
	0 °C	85%
Self Discharge	PB series batteries may be stored for up to 6 months at 25 °C and then a freshening charge is required. For higher temperatures the time interval will be shorter.	



Applications

- ◆ Electric tools
- ◆ Vehicle in place of walking
- ◆ Lawn mowers
- ◆ Golf trolleys and golf cart
- ◆ Portable apparatus, lights and instruments;
- ◆ Electric toys
- ◆ Illumination light
- ◆ Fire alarms
- ◆ Portable power
- ◆ Wheelchairs
- ◆ Medical equipments.



Constant Current Discharge (Amperes) at 25 °C (77°F)

F.V/Time	5min	10min	15min	30min	45min	1h	2h	3h	5h	8h	10h	20h
1.60V	47.5	30.3	25.7	16.4	12.1	11.1	7.0	5.0	3.4	2.2	2.0	1.1
1.65V	46.7	29.7	25.3	16.1	11.9	10.9	6.9	4.9	3.3	2.2	1.9	1.08
1.70V	45.8	29.2	24.8	15.8	11.6	10.7	6.8	4.8	3.2	2.1	1.9	1.06
1.75V	44.9	28.6	24.3	15.5	11.4	10.5	6.7	4.7	3.2	2.1	1.9	1.04
1.80V	43.2	27.5	23.4	14.9	11.0	10.1	6.4	4.5	3.1	2.0	1.8	1.00

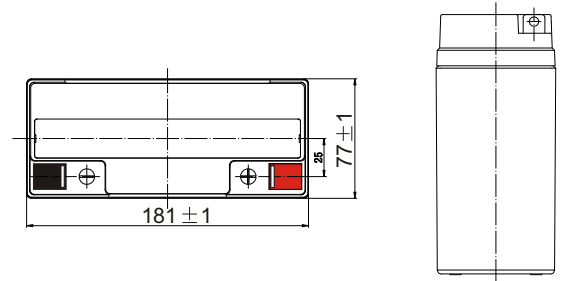
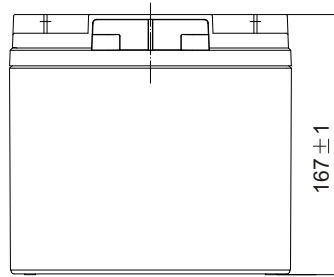
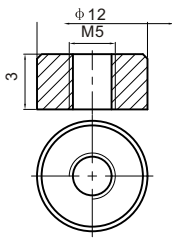
Constant Power Discharge (Watts/cell) at 25 °C (77°F)

F.V/Time	5min	10min	15min	30min	45min	1h	2h	3h	5h	8h	10h	20h
1.60V	91.5	58.3	49.5	31.6	23.3	21.3	13.6	9.5	6.5	4.3	3.8	2.1
1.65V	89.8	57.3	48.6	31.1	22.8	21.0	13.3	9.4	6.4	4.2	3.7	2.1
1.70V	88.1	56.2	47.7	30.5	22.4	20.6	13.1	9.2	6.2	4.1	3.7	2.0
1.75V	86.5	55.1	46.8	29.9	22.0	20.2	12.8	9.0	6.1	4.0	3.6	2.0
1.80V	83.2	53.0	45.0	28.8	21.1	19.4	12.3	8.7	5.9	3.9	3.5	1.9

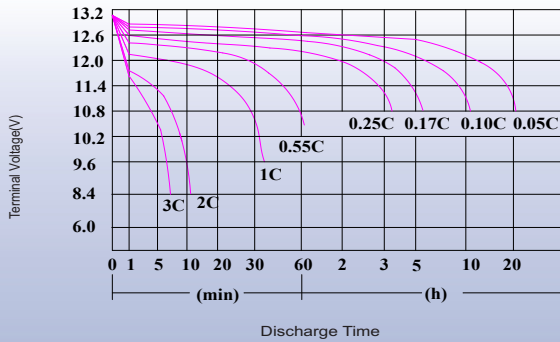
Dimensions

T12 Terminal

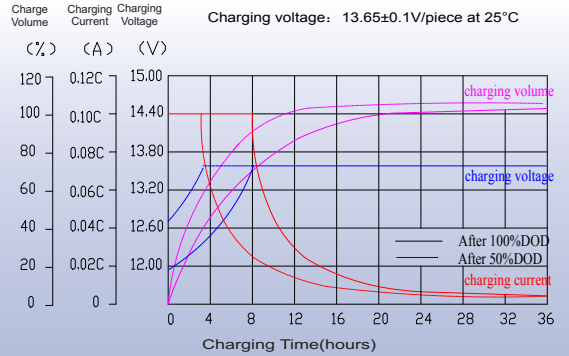
Unit: mm



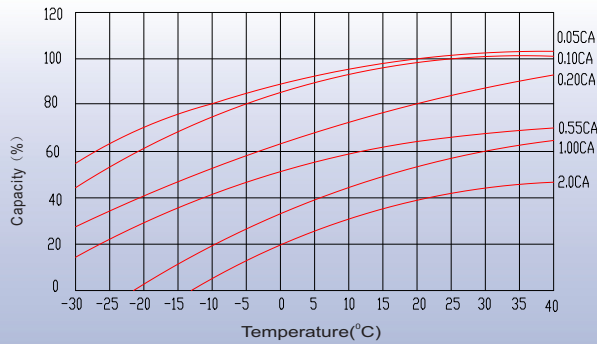
Discharge Characteristics



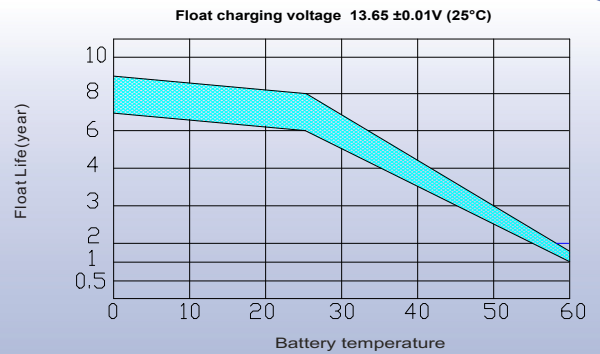
Float Charging Characteristics



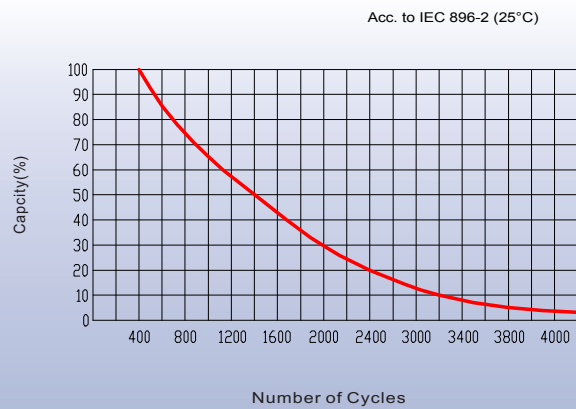
Temperature Effects in Relation to Battery Capacity



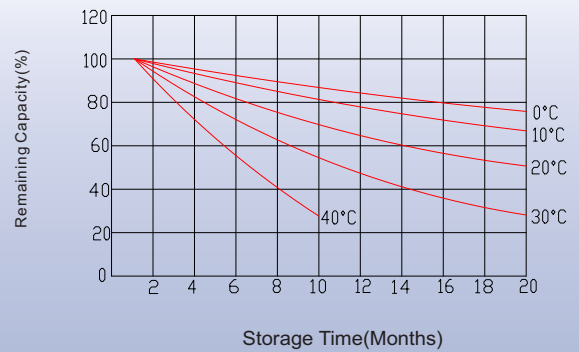
Effect of Temperature on Long Term Float Life



Cycle Life in Relation to Depth of Discharge



Self Discharge Characteristics



Contact